

Perspectives on the Great Lake Legacy Act

Panel, Great Lakes Greater Challenges
ABA SEER 23rd Fall Conference
Chicago, Illinois
October 29, 2015

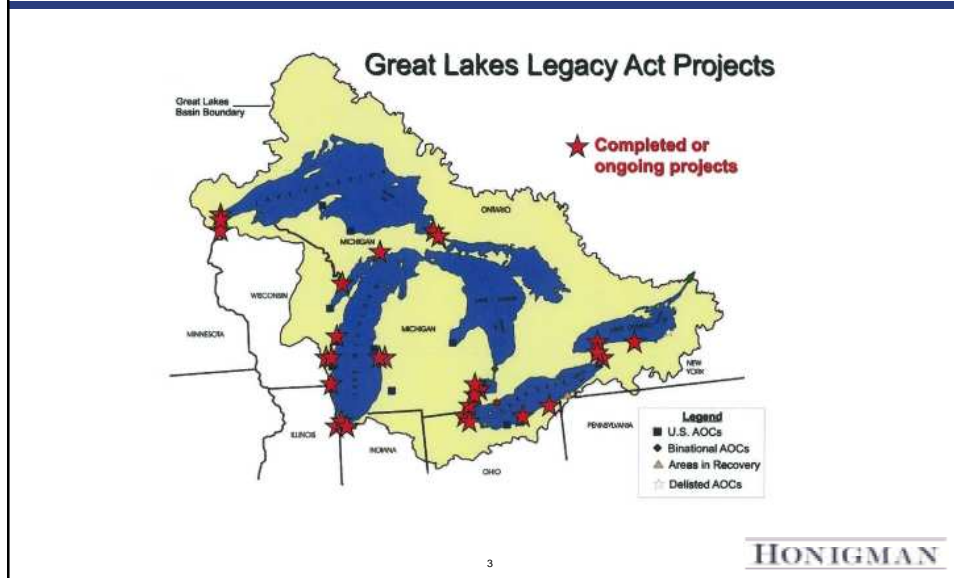
Steven C. Nadeau, Esq.
Honigman Miller Schwartz
and Cohn LLP
(313) 465-7492
snadeau@honigman.com

Great Lakes Legacy Act

- Overview of the Legacy Act
- Advantages
- Disadvantages
- Examples
 - St. Louis River (MN)
 - River Raisin (MI)
 - Spirit Lake (St. Louis River, MN)
- Value of the Legacy Act



Great Lakes Legacy Act



Alternate Approach – Great Lakes Legacy Act

- Enacted in November 2002 (Pub. L. 107-303)
- Reauthorized and amended in October 2008 (Pub. L. 110-365)
 - Bipartisan support
 - Collaborative effort by industry and environmental groups
- Purpose: Jump start sediment cleanups in Great Lakes Areas of Concern by partially funding public-private partnerships

4

HONIGMAN

Categories of Projects

- Remediation (up to \$50 M / yr authorized)
 - Requires 35% to 50% non-federal match for remedial activities
 - Requires 100% non-federal funding for operation and maintenance
- Site Characterization (not more than 20% of the funds appropriated for remediation projects)
 - No non-federal match required
 - Only one site assessment per discrete site

5

⁵
HONIGMAN

Priorities For Use Of GLLA Funding

- Projects that will use an innovative approach, technology or technique that may provide greater environmental benefits, or equivalent environmental benefits at a reduced cost
- Projects that include remediation to be commenced not later than one year after the date of receipt of funds
- Projects that are “ready to go”

6

⁶
HONIGMAN

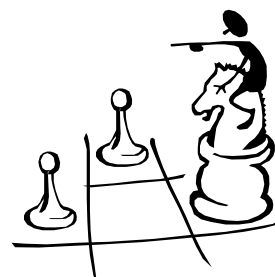
Seeking GLLA Funds

- Consider whether GLLA funds may be available early in a site's life span and strategically plan to avoid or minimize the hurdles to obtain GLLA funds for a site involving a PRP or PRPs
- GLNPO accepts proposals on an on-going basis
- GLNPO appropriated funds are being fully utilized each year – submit early!

⁷
HONIGMAN

Advantages Over CERCLA/RCRA

- Accelerate progress at sites
 - Don't get bogged down in CERCLA/RCRA/State Clean-up process issues
 - Don't spend time negotiating lengthy AOC or CD
- Creative, collaborative, can-do partner in GLNPO
 - Focus on efficiently reducing risk with the limited resources that are available



⁸
HONIGMAN

Advantages Over CERCLA/RCRA

- GLNPO is an active problem-solver and can assist with challenging stakeholder issues
- Common goal is to complete risk–reduction projects while funding is available
 - All parties motivated
 - GLNPO has a “stake in the game”
 - No stipulated penalties
- Industry has embraced the Legacy Act Program and has participated as a non-federal partner at many sites in Areas of Concern

9

HONIGMAN

Limited Disadvantages

- No covenant not to sue
- No funding guarantee until Project Agreement signed
- Annual funding subject to Congressional appropriations
- Greater competition for available annual funding



10

HONIGMAN

Examples of Successful GLLA projects
Involving Industry

11

HONIGMAN

St. Louis River Interlake Duluth Tar
(SLRIDT) Site



The left photograph shows a red semi-truck with a long trailer carrying several large, dark, cylindrical objects, likely drums of tar, parked on a dirt lot in front of a large, light-colored industrial building. The right photograph shows a construction site where a large white liner is being laid out on a concrete or gravel surface next to a body of water. Several workers in safety gear are visible in the background.

12

HONIGMAN

SLRIDT

- Site impacted with PAHs
- GLLA project – “betterment” to ROD remedy
 - Use Activated Carbon Mat in CAD cap
 - Protect bioactive zone from COCs during cap consolidation
 - Barrier to root penetration
 - Cap thinner, resulting in better habitat
- Cost-share 50% GLLA/50% XIK Corp.
- Total Project Cost < \$3M

13

HONIGMAN

River Raisin GLLA Project



14

HONIGMAN

River Raisin

- Site impacted with PCBs
- GLLA Project
 - RD/RA – Dredging
 - Site recontaminated following a 1995 remedial action
- State of Michigan and Ford are non-federal sponsors
- MDEQ
 - Cash contributions
- Ford
 - In-kind service: Removal of inert historical navigationally dredged material from the CDF and disposal on Ford's nearby property
 - Cash contribution

15

HONIGMAN

Dredging Details – Base Project

- 109,000 Cubic Yard of Total Dredging
 - 3,000 CY of TSCA (>50 ppm PCBs)
 - 106,000 CY of non-TSCA (<50 ppm PCBs)
- TSCA Dredging
 - Mechanical Dredge with Silt Curtains
 - Processing at Ford Property
 - Disposal at EQ's Wayne County Landfill
- Non-TSCA Dredging
 - Hydraulic Dredge with Pipeline
 - Disposal at Sterling State Park CDF

16

HONIGMAN

Innovative In-Kind Example – Creating CDF Disposal Capacity

- Use of CDF required EPA and MDEQ to remove an equal volume (106,000 CY), for disposal elsewhere
 - Preserved capacity at CDF for future maintenance of the navigation channel
- Extensive chemical testing identified 112,000 CY of material identified as “inert” by MDEQ
- Material to be excavated, dewatered, and stockpiled on Ford property for future use at the site

17

HONIGMAN

Supplemental Project – 2012-2015

- During confirmatory sampling of the final DMU, PCB NAPL was discovered above TSCA levels
- Extensive new sampling focused on a 1.2 acre area in Fall 2012, Spring 2013 & Summer of 2014
- The NAPL area was delineated vertically and horizontally
- NAPL located in stiff glacial till/weathered bedrock – dredging challenges expected
- Construction anticipated in Fall 2015
- Partners: GLNPO, MDEQ and Ford

18

HONIGMAN

Spirit Lake



19

HONIGMAN

Spirit Lake

- Site impacted with PAHs
- GLLA Project – RI/FS
 - No Further Action ROD for sediment
 - Expected accumulation of clean sediment in a few areas not occurring at rate anticipated
 - Initial Phase - speed was critical – needed to sample on ice!
- Cost-share RI/FS with Industrial non-federal sponsor
- Remedy Selection about to occur
- Classic Legacy Act Example – accelerated sediment remediation; bonus of accelerating upland work
- Strong partnership between GLNPO, MPCA and the non-federal partners

20

HONIGMAN

Value of GLLA

- GLNPO is a great partner
 - Expertise
 - Creative problem-solving
 - Stakeholder assistance
 - Focus on results, not process
 - Efficiency
 - Earlier site remediation
 - Funding



21

HONIGMAN

Many Other Successful Projects

- Ashtabula, Ohio
- Tannery Bay – Sault Ste. Marie, Michigan
- Ottawa River, Toledo, Ohio
- Black Lagoon, Michigan
- Ruddiman Creek, Michigan
- Lower Rouge River, Michigan
- Kinnickinnic River, Wisconsin
- Grand Calumet, Indiana
- Buffalo River, New York

22

HONIGMAN

Questions ?

Steven C. Nadeau, Esq.
Honigman Miller Schwartz and Cohn LLP
Coordinating Director, Sediment
Management Work Group
Phone: (313) 465-7492
Fax: (313) 465-7493
snadeau@honigman.com
Visit the SMWG website: www.smwg.org